

Qingdao Flying Jerry Metal Products Co.,LTD

No.228,Huanda Road, Huangdao District,Qingdao,China (266400)

MOBILE:+0086-13589361651(WeChat/WhatsApp)

Contact: Fay Chai (Miss) E-Mail : sales@flyingjerry.com

Shelving Rack Product Details

Any Size available
900x400x1800mm
900*300*1800mm
900*450*1800mm
750*300*1500mm
700*300*1500mm
1200*450*1800mm
1000*600*1800mm
et cetera

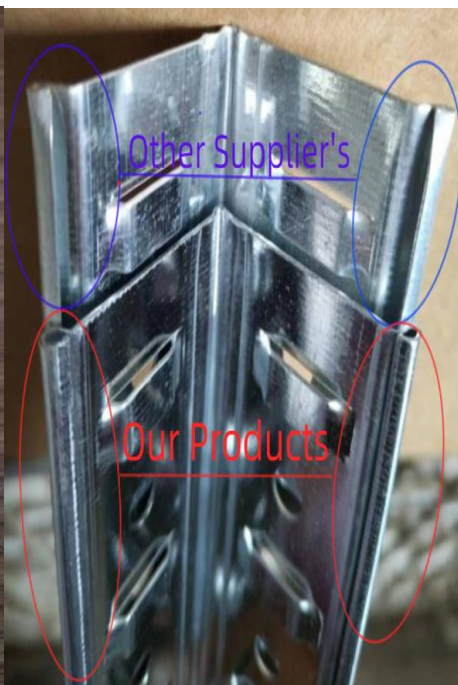
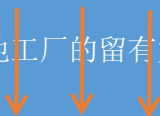


1.Curled Edge Upright 立柱 (Patent Pending专利申请中)

1)Our uprights are curled edged closely as picture showed.Other supplier's uprights are open which can cut the hands.Ours are very safe.

我们工厂的立柱两边弯曲紧密，没有漏缝。其他工厂的留有大块漏缝，很容易在安装过程中伤到手，而我们的很安全。

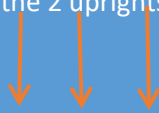
2)Our Uprights are very streight in a line
立柱笔直无弯曲



2.Link Parts 连接件(Patent Pending专利申请中)

The steel link of the uprights are with 4 raised parts to link the 2 uprights tightly.However other suppliers do not have.

连接件部分有4个凸起的点，让上下立柱连接更牢固



3. Central Support 支撑

Additional central support makes the shelf more strong

每层一根横梁让整体货架更坚固



4. MDF Board 密度板

MDF board,more strong,more durable,more environmental

密度板，更结实，更耐用，更环保



MDF Board



5.Raw Material Bang for the buck 原料货真价实

Our raw material---Uprights material blank size is 8cm,other sizes are 6.35cm.Other suppliers sizes are 7.8cm and 6.2cm

我们产品立柱的展开料是8厘米，其他尺寸是6.35厘米。但别的厂家的展开料分别是7.8厘米和6.2厘米。



6.Plastic Edges 护角

8 plastic edges protectors to protect the floor,to make the shelf anti-slip.

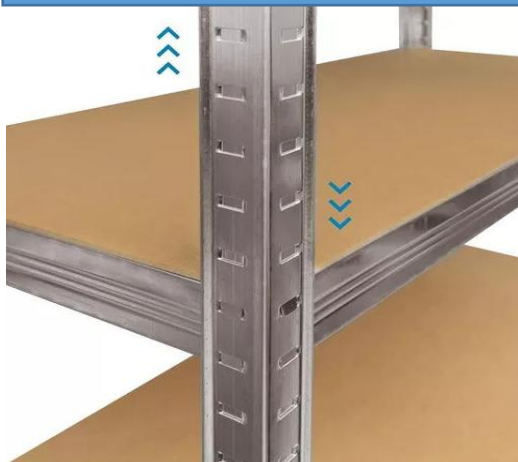
8个护角，保护底板，防滑。



7.Adjustable Height 层高可调

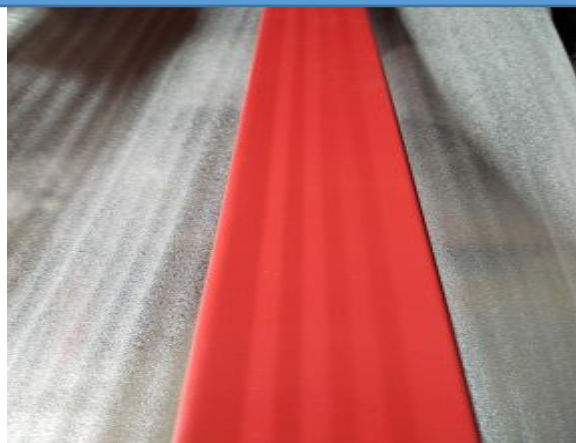
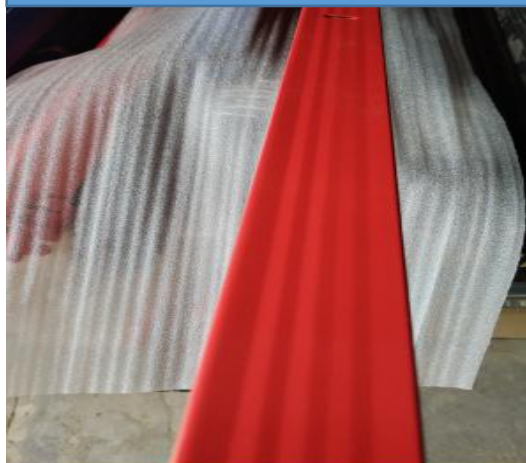
Boltless shelf.The shelf height is adjustable

免螺丝。货架高度可随意调节



8. Lined Beams 防滑长短撑

waved beams, more durable and anti-slip. Not easy to drop from hands when assemble the product.
长短撑呈波浪状，防滑。安装时候不易从手里脱落。



9. Colorfull Painted 任意颜色

original silver color or any other color paints
银色原色或者其他任意颜色



10. Package 纸箱包装

All the accessories are in one carton
所有部件放入一个纸箱。



11.Container Loading集装箱

Loading the container,in bulk or on the pallet
集装箱--散装或者托盘装

